



Label Printer **A⁺** and **XD**

The Premium Class.

One concept – 6 designs



A2+

The small sized

The lean solution for preciseness and accuracy.
For exceptionally narrow labels from 4 – 60 mm width with a print resolution of 300 and 600 dpi.



A4+

The all-rounder with plenty of accessories

The fast solution for every industrial application.
For labels and continuous materials from 4 - 120 mm width with a print resolution of 200, 300 and 600 dpi and a print speed up to 250 mm/sec.



A4+M

The special one with centred material guide

The solution for thick continuous materials like tubes and tapes or if it is necessary to change labels with different widths often.
For materials from 4 - 110 mm width with a print resolution of 300 and 600 dpi.



A6+

The broad

The adequate solution for labels up to 176 mm width.
Perfect for the application with Odette and UCC/EAN 128.



A8+

The extra broad

The major solution for a label width up to 220 mm.
Typical application areas for the A8+ are the packaging industry and pallet labelling as well as the chemical industry.



XD4M

The double sided with centred material guide

The formidable solution for simultaneous printing of front and back of continuous or prefabricated materials up to 110 mm width. If textiles, paper, card board or flat compressed heat shrink tubes: the materials are printed double sided with a print resolution of 300 dpi.

The printers for industrial demands



Our professional printers are applied within a broad application range. Our ambition during development was to create an easy and intuitive handling

and high reliability. The print mechanism and the chassis are made of first-class material, perfectly harmonised in their form and function. Extensive periphery

and software ensure customer-specific solutions – any time. Stand-alone operation, PC-application or network operation: A+ is the solution!

Small and large labels precise and fast

PCB label



Smallest label size 4 x 4 mm, if there is only minimum space.

Type plates



Pin sharp fonts, graphics and barcodes with 600 dpi.

Labels for cardboard



Labels up to DIN standard A4.

Just a few steps to optimum appliance

Thermal transfer



For printing on standard paper, card board, textiles, synthetic materials PE, PP, PVC, PA or PI. This print method requires wax, resin or wax/resin ribbons.

Thermal direct



All transfer printers can be operated in thermal direct printing mode without ribbon.

RFID (optional)



With the cab RFID option the transponders within the Smart-labels are read and rewritten before printing.

Basic version



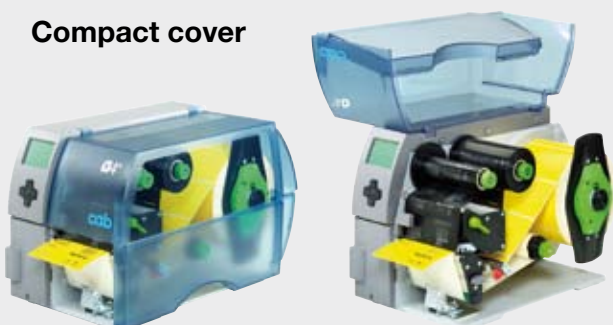
For printing on labels and continuous material. The material is torn off with the ridged tear-off plate. Optionally it can be cut off or rewound externally.

Dispense version „P“



For printing and dispensing labels. During the printing process the label is removed from the liner. It can be taken off manually or with an applicator. The present sensor has to be ordered separately.

Compact cover



The 2-part cover made of impact resistant synthetic folds when opened. On that account this printer has the smallest footprint in its class.

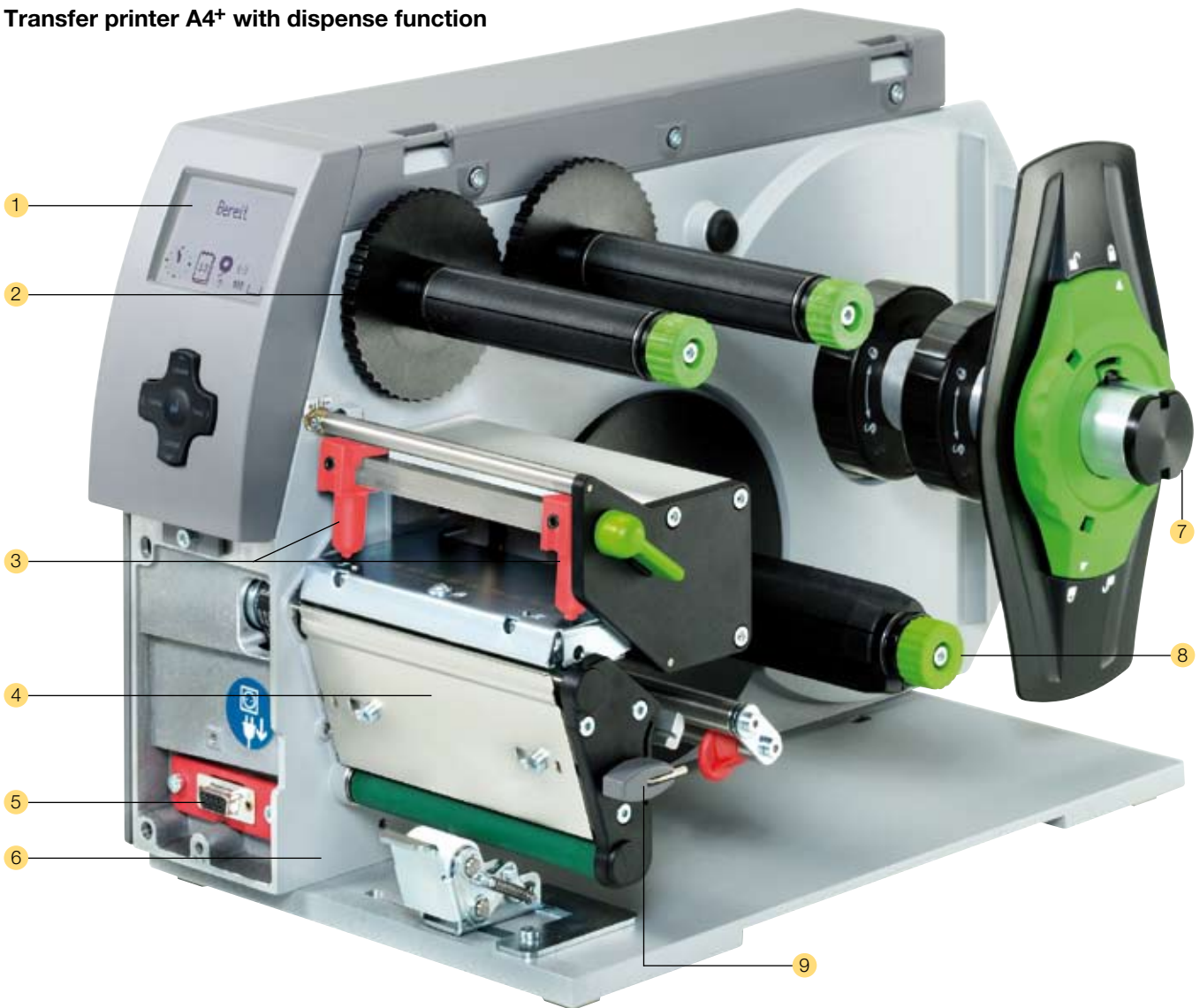
Metal cover



The transfer printers A4+ and A6+ are also available with metal cover on request. (Standard with the A8+)

Precise printing: the elaborate – made easy

Transfer printer A4⁺ with dispense function



1 Big graphic display

White backlight guarantees clarity of display.

2 Ribbon retainer

The threepart tightening axles allow a fast and easy ribbon exchange.

3 Easy adjustment

The print head is pressed down with two sliding toggles. One is mounted to the left label margin, the other one is pushed to the right label margin.

4 Peel-off option

The label is removed via peel-off-plate. A high printing and applying accuracy can be achieved with the additionally

powered rewind assistant roller and the pinch roller.

5 Peripheral connection

Add-on modules like cutter, external rewinder, present sensor, peel-off adapter and applicators can be easily connected via USB peripheral interface.

6 Solid, buckling resistant metal chassis

It is made of dye-cast aluminium. All devices are assembled to it.

7 Roll holder

For core diameters up to 38 mm. For core diameters from 76 mm we include adapters for better winding.

The spring mounted margin stop ensures constant tension while feeding and therefore a highly precise imprint.

8 Internal rewinder

The threepart tightening axles allow the easy rewinding and removing of labels or backing paper with or without paper core.

9 Only one tool for all maintenance tasks

The Allen key is located ready to hand directly at the printer.



Do-it-yourself servicing of consumables

Label sensor



The label sensor can be unlocked with finger pressure and removed for cleaning.

Print head



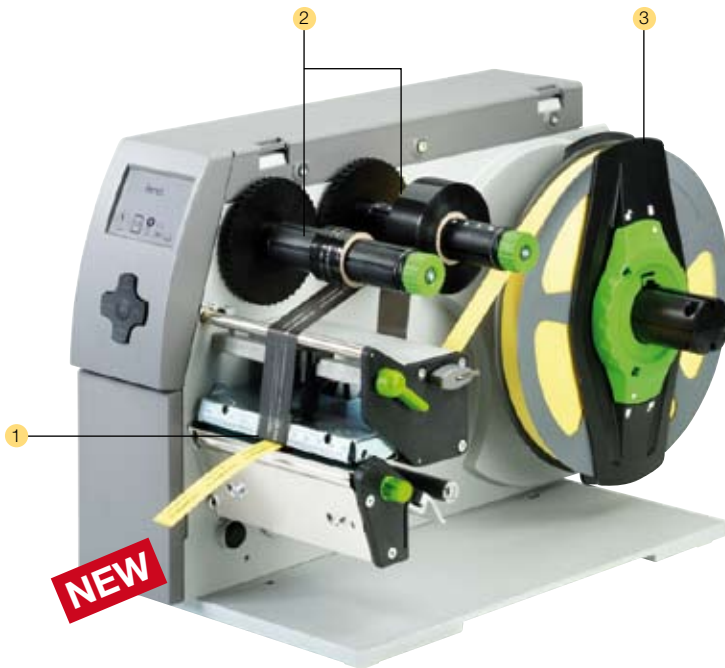
The print head can be exchanged in only a few steps. Adjustments and settings are not necessary.

Print roller



For cleaning or replacement the print roller can be easily removed by loosening only three screws.

With centred material guide



Special features:

- No adjustment of the print head for different widths of material.
- No drapery of ribbon.
- Printing on very narrow or very thick continuous materials.
- The gap height at the material sensor for flat tubes and synthetic tapes is up to 4 mm.
- The print speed for difficult printable materials is reduced to 30-125 mm/sec.
- Operation and software are compatible with the A⁺-series.

1 Material guide

Precise printing due to the material guide located directly behind the print roller. The width is adjusted with a spindle.

2 Ribbon retainer

Easy and centred insertion of the ribbon with the threepart tightening axles.

3 Label retainer

The labels are inserted into the label retainer and adjusted automatically with the margin stops.

Technical Data XD4M

For double sided printing with centred material guide



Special features:

- Two stacked print engines for simultaneous printing of front and back.
- No adjustment of the print head for different widths of material.
- No drapery of ribbon.
- For continuous or prefabricated materials like paper, card board, textiles and synthetics.
- The gap height at the material sensor for flat tubes and synthetic tapes is up to 4 mm.
- The print speed for difficult printable materials is reduced to 30-125 mm/sec.
- Operation and software are compatible with the A⁺-series.

1 Material guide

Precise printing due to the material guide located directly behind the print roller. The width is adjusted with a spindle.

2 Ribbon retainer

Easy and centred insertion of the ribbon with the threepart tightening axles.

3 Label retainer

The labels are inserted into the label retainer and adjusted automatically with the margin stops.

All required interfaces



- 1 Serial RS232C interface.
- 2 USB 2.0 Slave interface.
- 3 Ethernet 10/100 Base T-interface with TCP/IP.
- 4 Slot for Wireless LAN-Wifi-card.
- 5 Two USB-Master-interfaces to connect an external operation panel, keyboard, scanner or Service Key.
- 6 Slot for memory card CompactFlash Type I.

Options



Centronics interface
RS422/RS485 interface

The interfaces are plugged onto the PC.
Connection to the printer via mini USB connection cable.



Label selection box – I/O box.
Up to 16 different labels can be loaded via SPS from a memory card. Operation of four in-/outputs via Basic Interpreter.



WLAN card 802.11 b/g.

Stand-alone operation without PC

Accessories for the stand-alone operation



Memory card

CompactFlash Type 1.
Storage of label formats, fonts, texts or graphics.

Read- and writable within the printer or in the PC.



Compact keyboard

Connection: USB
Number of keys: 86

L x W mm: 282 x 132, Cherry Classic Line G84-4100 LCM



Standard keyboard

Connection: USB
Number of keys: 115

L x W mm: 460 x 192, Cherry G83-6504 LAD

The layout of the labels is created either with the label software or direct programming via text editor directly on the PC. Label formats, fonts and graphic data, serial data and data base contents are saved on the CF memory card or the internal IFFS printer memory.

Only variable data is sent to the printer via keyboard or host computer before being printed out. Data of a barcode scanner or a scale can be fed additionally.

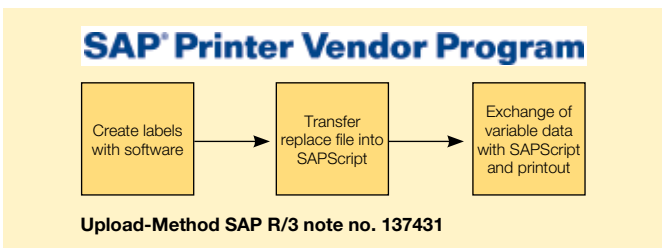


The functions of the devices and conformity to CE-standards are only warranted by using the accessories made by cab or recommended by cab.

J	Job Start
H 100	Speed (100 mm/s)
O R	Orientation rotated by 180°
S 11;0,0,68,70,100	Size of label (100x68 mm, gap 2 mm)
T 10,10,0,5,pt20:sample	Text object/font: Swiss bold, 20 pt
B 10,20,0,EAN-13,SC2;401234512345	Barcode EAN 13, size SC 2
G 8,3,5,0;R:30,9,0,3,0,3	Graphic, box 30 x 9 mm, Line strength 0.3 mm
A 1	Number of labels (in this example 1)

Direct programming with J-Script

The printer language is easy to understand and integrate into your host system. Linkage of variable data with host application. Label design, graphics and fonts are recorded on the compact flash card. The host computer sends only the variable data to the printer.



Integration into SAP R/3

In collaboration with SAP cab developed the so-called "Replace method" in order to control the cab printers with SAPScript from SAP/R3.

As Silver Level-partner in SAP's Printer Vendor Program cab has access to the SAP development area for optimal printer support in an SAP environment.

SAP and R/3 are registered trademarks of SAP AG.

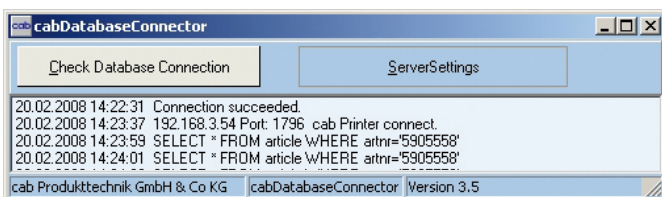
```

DEFAULT.LBL - Editor
Datei Bearbeiten Format Ansicht ?
<ABC>
DO
LINE INPUT a$
IF LEFT$(a$,15)="194300301480070" THEN
PRINT "R t2;";MID$(a$,16)
ENDIF
IF LEFT$(a$,15)="194300300580172" THEN
PRINT "R t3;";MID$(a$,16)
ENDIF
IF LEFT$(a$,15)="194300301970073" THEN
PRINT "R t1;";MID$(a$,16)
ENDIF
LOOP
</ABC>
  
```

abc - Basic Compiler

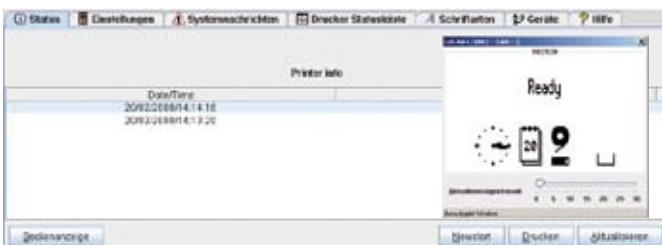
As an integrated element of the firmware it enables the printer to process data via BASIC programming before being transmitted to print editing. Thereby external printer languages can be replaced or data from other systems, e.g. SPS or a scale, can be transferred to be printed on different label sizes.

Example of use:
Connection to a scale



Database Connector

The database connector enables stand-alone printers to link up data from a SQL-compatible database and to print. Data can be rewritten and modified simultaneously with the printing process.



Printer monitoring with Intra- and Internet

The integrated HTTP- and FTP-Server enables, with standard programs like web browser or FTP-clients, the print monitoring, configuration, the firmware-update and the administration of the memory card. Status signals, warning or error signals are sent to users or administrators either as email or SNMP-datagram via SNMP- and SMTP-clients. Synchronization of time and date with a time server.

cab Network Manager

Name	Type	Address	Status	Pin
--CAB--	cab A4+r300	192.168.3.54	Ready	0-~
---	cab D4+r300	192.168.2.111	n/a	0-~
Support	cab A6+r300	192.168.3.50	n/a	0-~

Administration Network Manager

The cab network manager enables the user to govern several printers within the network at the same time. It supports monitoring, configuration, firmware updates, memory card, datasyncronization and PIN-administration centrally.



Windows® driver

Our drivers are officially certified by Microsoft and ensure the direct creation and printing of labels from Windows-based programs like Word, Excel, Access, Works, Corel Draw etc.



Apple-Mac OS X® driver*

Alternatively cab offers a CUPS-based printer driver for MAC OS.

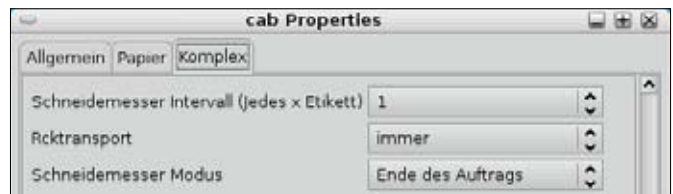
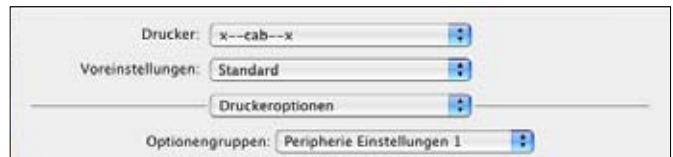


Linux driver*

Alternatively cab offers a CUPS-based printer driver for Linux.

*not for XD4M

Microsoft® is a registered trademark of Microsoft Corporation.
MAC OS® is a registered trademark of Apple Computer, Inc.



Label software

The ideal design of a label is realizable by using different fonts, heights, widths and arrangements. cab offers a large number of internal bitmap and vector fonts. Most of the country-specific codepages are supported, which means that county-specific special characters can be printed – in 24 languages.

● **cablabel R2 Lite**

Extensive standard label software. You get it - free of charge - included in delivery.

● **cablabel R2 Pro**

Maximum flexibility – whether simple texts, barcodes, graphics or the connection of databases. A wizard supports the creation of a UCC/EAN 128 barcode. It helps to open and handle several labels at the same time. Objects can be copied, moved and inserted into another label. It provides its own internal printer drivers which can communicate with the printer functions individually via J-Script.

Additional label software

Optimum variability – the transfer printers and the print & apply systems from cab can be easily controlled with other merchantable software like Codesoft, Easylabel, Bartender, NiceLabel or Labelview.



cablabel R2	Lite	Pro
Windows 2000 SP4, XP Prof. SP2, Server 2003 SP2, Vista / 32 bit	■	■
24 languages	■	■
Label samples	■	■
Undo-function	■	■
Import of graphics	■	■
Graphic barcodes	9	37
Native printer barcodes	■	■
Support Windows driver		■
Number of printers	1	99
Database Manager (Access, DBF, ASCII, OLEDB, ODBC)		■
cab Database Connector		■
Stand-alone operation	■	■
Support printer real-time clock	■	■
Internal printer counter	■	■
Text alignment		■
User input (formular)	■	■
Formula editor		■
UCC/EAN 128 and Maxicode wizard		■

Technical data transfer printer 12

1. Print head	A2+		A4+		A4+M		A6+	A8+	XD4M		
Print method	Thermal transfer / Thermal direct										
Print resolution dpi	300	600	203	300	600	300	600	300	300		
Print speed up to mm/s	150	100	250	250	100	125	100	200	150	125	
Print width mm	54.2	57	104	105.6	105.6	105.6	105.6	162.6	216	105.6	
2. Material											
Labels, continuous rolls or fan-folded	paper, cardboard, textile, synthetics like PET, PE, PP, PVC, PU, Acrylat, PI										
Material thickness mm / weight g/m ²	0.055 - 1.2 / 60 - 300										
Label width ¹⁾ mm	4 - 63		20 - 116		4 - 106		50 - 176	50 - 220	-		
Width of liner or of continuous material mm	25 - 67		25 - 120		3.5 - 110		50 - 180	50 - 235	3.5 - 110		
Label height ¹⁾ mm	4 - 1000				5 - 1000		6 - 1000	10 - 1000	5 - 1000		
Label height when dispensing ¹⁾ mm	12 - 200				-		25 - 200	-	-		
Media roll: Total diameter up to mm	205				205		205		300		
Core diameter mm	38 - 100										
Winding direction	outside or inside										
3. Ribbon											
Ink	outside or inside										
Roll diameter up to mm	80										
Core diameter mm	25										
Ribbon length variable up to m	500										
Width up to mm	56		114				165		220	114	
4. Internal rewinder (only peel-off version)											
Total diameter up to bis mm	142						-		-		
Core diameter mm	38.1						-		-		
Winding direction	only outside						-		-		
5. Dimensions of the printer											
Height x Depth mm	274 x 446						395 x 554				
Width mm	190		242				302		352	248	
Weight kg	8,5		9				13		15	21	
6. Label sensor											
See-through sensor	for leading edge of the label or punching marks and end of material										
Reflective sensor from the bottom / from the top	for printing marks										
Distance to locating edge mm	5 - 26		5 - 53		-		5 - 53		-		
Distance from the center to the left	-		-		0 - 53		-		0 - 53		
7. Electronics											
Processor high speed 32 Bit ColdFire/Clock rate MHz	266										
(RAM) MB	64										
Memory IFFS MB Flash	8										
Slot for memory CompactFlash-card Type I	■										
Slot for Wireless LAN-card	■										
Battery cache for	Real-time clock, printout of time and date Storage of data with shut-down										
Warning signal	Acoustic signal when error										
8. Interfaces											
Centronics bi-directional acc. IEEE 1284	□										
RS232 C 1.200 up to 230.400 Baud/8 Bit	■										
USB 2.0 High Speed Slave for PC-connection	■										
Ethernet 10/100 Base T, LPD, RawIP-Printing, ftp-Printing, DHCP, HTTP, FTP, SMTP, SNMP, TIME, Zeroconf, mDNS, SOAP	■										
RS422, RS485 1.200 up to 230.400 Baud/8 Bit	□										
Peripheral connection	■										
WLAN card 802.11b/g WEP/WPA PSK (TKIP)	□										
2 x USB Master for	external operation panel, keyboard, scanner or service key										
9. Operation data											
Power supply	100 - 240 V ~ 50/60 Hz, PFC										
Power consumption	max. 300 W										
Operation temperature	10 - 35°C										
Humidity	30 - 85% not condensing										
Approvals	CE, FCC class A, CB, CCC, UL										

¹⁾ Depending on label size, material and adhesive limitations are possible.
Critical material or applications have to be tested and cleared.

■ Standard □ Option

10. Operation panel	
Buttons illuminated/LED-Graphics:	Pause, Feed, Cancel, Menu, Enter, 4 x Cursor
LCD graphic display:	Width 60, Height 40 mm 4 lines, characters about 20
11. Settings	
	Time, date, digital or analog clock 19 language settings system settings, print parameters, interfaces, security
12. Monitoring	
Stop printing if	End of ribbon End of labels Print head open
On the display	Data reception Clock WLAN field intensity Date sheet Ethernet state abc Debug Used memory Input buffer Temperature print head Access to memory card Remaining quantity of ribbon
13. Test routines	
System diagnosis	when switched on with testing of print head
Short Status, Status print	font list, device list, WLAN state, profile of label, test grid, monitor mode, PPP state
Status reports	Extensive status print with information about setting, e.g. print length counter, runtime counter etc. Request of machine state via software command. Detailed status messages on the display, e.g. network error-no link, barcode error etc.
14. Fonts	
Font types	5 Bitmap fonts incl. OCR-A, OCR-B and 3 Vector fonts Swiss 721, Swiss 721 Bold and Monospace 821 available internally, loadable TrueType fonts. Optional Chinese (simplified Chinese) Optional Thai
Character sets	Windows 1250 up to 1257, DOS 437, 737, 775, 850, 852, 857, 862, 864, 866, 869, EBCDIC 500, ISO 8859-1 up to -10 and -13 up to -16, WinOEM 720, UTF-8, Macintosh Roman, DEC MCS, KOI8-R. All West and East European latin, cyrillic, greek, hebrew and arabic characters are supported. Optional Thai and Chinese
Bitmap-Fonts	Size of width and height 1 - 3 mm zoom 2-10. Orientation 0°, 90°, 180°, 270°
Vector-/TrueType fonts	Size of width and height 0.9 - 128 mm variable zoom, Orientation 360° in steps of 1°
Font formats	Bold, italic, underlined, outline, negative, grey, vertical, depending on character fonts
Font width	Variable

15. Graphics		
Graphic elements	Line, arrow, box, circle, ellipse, filled and filled with fading	
Graphic formats	PCX, IMG, BMP, TIF, MAC, GIF, PNG	
16. Codes		
Linear Barcodes	Code 39, Code 93 Code 39 Full ASCII Code 128 A, B, C Codabar EAN 8, 13 EAN/UCC 128 EAN/UPC Appendix 2 EAN/UPC Appendix 5 FIM HIBC	Interleaved 2/5 Ident- and leader code of Deutsche Post AG JAN 8, 13 MSI Plessey Postnet RSS 14 UPC A, E, E0
2D-Codes	Aztec, Codablock F, Data Matrix, PDF 417, Micro PDF 417, UPS Maxicode, QR-Code, RSS 14 truncated, limited, stacked and stacked omnidirectional, EAN-Datamatrix, GS1 Data Bar	
	All codes variable in height, module width and ratio. Orientation 0°, 90°, 180°, 270°. Optionally with check digit, printed characters and Start/Stop code depending on code type.	
17. Software		
Programming	J-Script direct programming	■
	abc-Basic Compiler	■
	Database Connector	□
System diagnosis/Administration	printer monitoring	■
	Network Manager	□
cab Label software	cablabel R2 Lite*	■
	cablabel R2 Pro	□
	Easylab, Codesoft	□
Additional Label software	Nicelabel, Bartender Label Matrix, Labelview	○
Windows driver	2000, XP 32/64 bit, 2003 32/64 bit, Vista 32/64 bit	■
Mac driver*	OS X printer driver from version 10.3	■
Linux driver*	Testet with Suse 9.0, CUPS based	■
Stand-alone operation		■
*not for XD4M		Standard ■ Option □ Authorised distribution by resellers. ○

The specifications are according to our current technical knowledge. They are subject to change.

Cut, perforate, stack



Cutter

The cutter is used to cut paper, cardboard, textiles, synthetics or heat shrink tubes.

Perforation cutter and cutter

The perforation cutter also permits the perforation of the material in order to separate it manually.

Cutter tray

The cutter tray can pile up up to 50 labels.



Stacker with cutter

The printed materials are cut and piled up with the stacker. The print job stops when the height of the pile is reached.

Adapter 100 mm Ø



To keep the bending of the material during piling as small as possible cab recommends a broad core diameter.

Storage table label width x height



The storage table and the protective cover are adjusted to the label size and have to be ordered separately.

Base frame A4 / XD



With the base frame the devices can be arranged on the table in any order.

	Cutter					Perforation cutter and cutter PCU4		Stacker with cutter	
	CU2	CU4	CU6	CU8			ST4/L	ST4/M	
Application	A2+	A4+	A4+M XD4M	A6+	A8+	A4+	A4+M XD4M	A4+	A4+M XD4M
Material width up to mm	67	120	110	180	232	120	110	20 - 110	20 - 100
Weight of material gr/m ² /cardboard	60 - 500					60 - 300		60 - 300	
Material thickness mm	0.05 - 1.2					0.05 - 1.2		0.05 - 0.8	
Cutting length mm	< 5					< 5		20 - 150	
Gap height up to mm	2.5					4.5		1.2	
Cuts/min.	130	120	110	100	Cutting 120 / Perforating 150		120		
Stop print job if:	Final position not reached					Final position not reached		Final position not reached, cover open, height of pile is reached	
	Cutter tray 4 for A4+ and A4+M					Perforating		Piling up reached	
	For material width up to mm 120 material height up to mm 100					Web width mm 0.5 Web distances mm 2.5 or 10		Height of pile up to mm 140	

Material winding and unwinding / Barcode control

Rewind guide for internal rewinding

The internal rewinding is operated by the dispense printer.
The peel-off-plate is replaced by the rewind guide plate (for devices A2+ and A4+).



External rewinder ER 1/2/3 for direct connection of the printer

The rewinder is screwed directly onto the printer.
The label winding is optional inside or outside.
A smooth and tight winding is due to the electronic control of the swing arm.



External rewinder ER 4/6/8 with built-in power supply

The rewinder can be attached to almost every other printer.
All other technical data are according to the rewinder (see section 5).



External unwinder EU 4/6/8

It enables a smooth feeding of labels for heavy rolls.
The unwinder works both with inside and outside wound labels.



Tester for linear barcodes

The built-in scanner tests the barcodes directly after printing.
If the barcode is not readable the printing process can be stopped at once so the faulty labels can be removed.
It is primarily intended to be used with the external rewinder ER4 - ER8.

For 2D-Codes on request.



	External rewinder										External unwinder			
	ER1/210		ER2/210	ER3/210	ER4/210		ER4/300		ER6/300	ER8/300	EU4/300		EU6/300	EU8/300
Application	A2+	A4+	A6+	A8+	A2+	A4+	A2+	A4+	A6+	A8+	A2+	A4+	A6+	A8+
Material width up to mm	67	120	180	235	67	120	67	120	180	235	67	120	180	235
Roll Ø max. mm	205	205	205	205	205	205	300	300	300	300	300	300	300	300
Core Ø mm	40 / 76													
Operating voltage	from transfer printer					100 - 240 V~ 50/60 Hz								
Label winding	outside or inside													

For dispensing of labels – automatically or on demand



1 Present sensor or pause adapter

Dispensing labels requires an additional present sensor or peel-off adapter. cab offers devices both for manual operation and automatic operation.

2 Extended present sensor

If labels are difficult to remove from the liner a peel-off plate with rewind guide plate, extended by 10 mm, is used.



Present sensor PS8 for manual operation

The photo cell detects the label in peel position and pauses the labelling process. After removing the label manually the next one is printed instantly.



Present sensor PS 5 for automatic operation

Printing and dispensing of the label is started with an external signal. The removal can be made by a robot or an applicator.

Inputs: Start, label removed, external error

Outputs: No print job, printer not ready, label in dispensing position.



Present sensor PS 6 for manual or automatic operation

1. As with PS8 after removing the label the next one is printed automatically.
2. Dispensing on demand with present trigger, foot switch or an external signal (according PS5).



Extended present sensor PS 9 for manual or automatic operation

For dispensing labels where the front edge is not detected by the present sensor PS6. The extension is made on customer-specific.



Pause adapter PS7 for basic and dispense devices

The print job is stopped with the pause signal. The active label is finished, e.g. by using a label loop.

Inputs: Pause, external error

Outputs: No print job, printer not ready, print job active

Printing and dispensing on demand

The user can attach a present trigger or foot switch onto the present sensor PS6 and PS9 and the pause adapter PS7 to start the print job.



Present trigger

Starts printing and dispensing.



Foot switch

Starts printing and dispensing.



Sub-D plug

Connection of the external control signals for automatic operation. Sub D plug 15-pole with screw clamps.



External panel

If the panel is not accessible anymore, e.g. after installation within a facility, it is possible to install an external panel. Additionally there is a slot for a CF memory card Type 1 and a USB Master interface.

Real-time application

The applicator A1000 represents, in combination with the thermal printers A2+, A4+ and A6+, a moderately-priced solution for both semi-automatic labelling and the integration into automated production lines.

1 Long economic life-time

The ball-bearing guide bars are low-wear.

2 Variable product heights

The lift cylinder allows labelling in different heights. It is available in different stroke-lengths.

3 Easy adjustment

The tamp pad is adjustable to the peel-off plate with four screws. The processing control is optimized during testing with the operation panel.

4 Pre-dispense button

Tests the labelling function. By pushing the button the first time the label is printed and held by the pad. By pushing the button again, the application is started.

5 Air-pressure regulation unit

The mounting takes place directly on the printer. The microfilters prevent contamination and the compressed air regulator ensures the labelling quality.

6 High process reliability

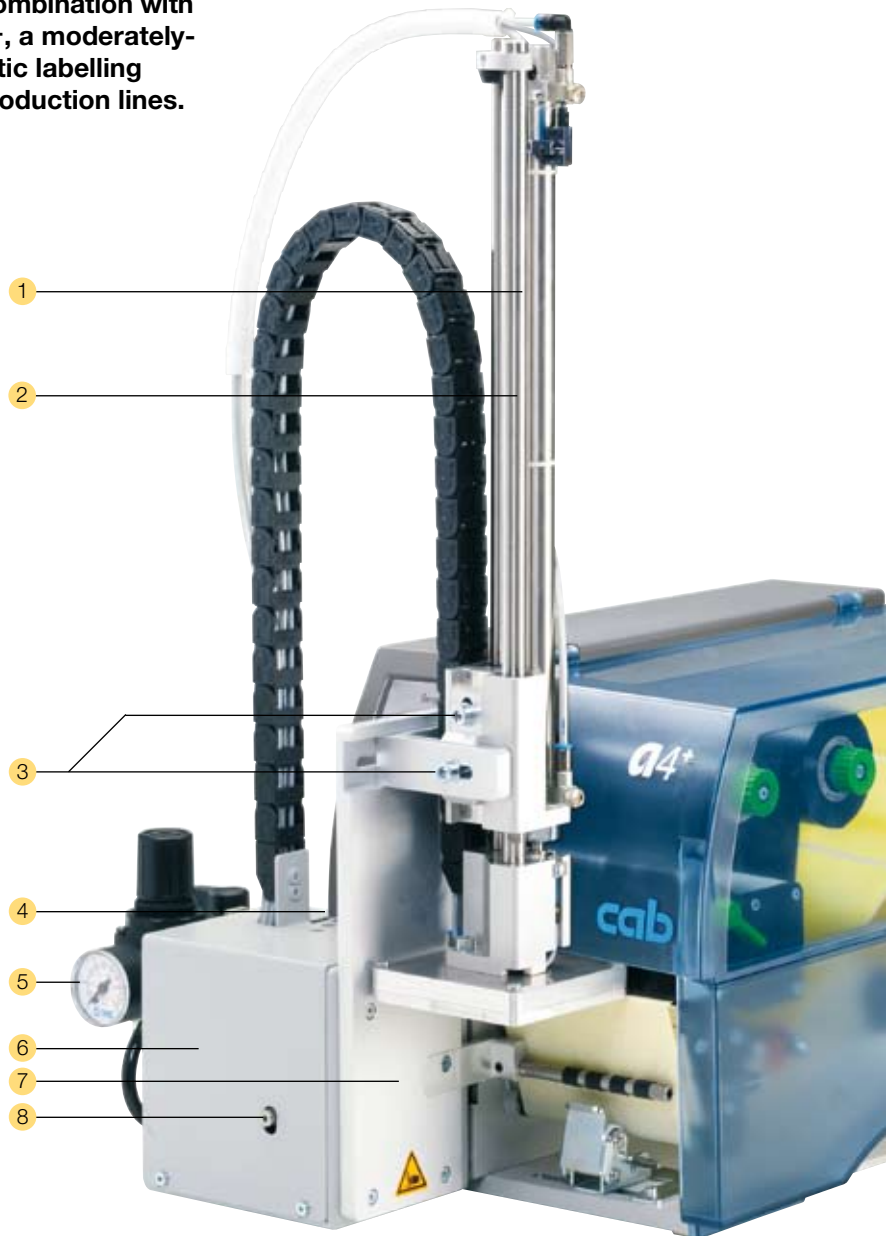
The supporting air jet streaming, the induction air and the lifting speed are adjustable. The pressure can be reduced down to less than 1 kg for highly sensitive products and packaging. Consequently there is no risk of damage. To avoid contamination of the vacuum holes they are cleaned with air pressure after each application.

7 Real-time application

Labels with a height of 25-200 mm and a width of 25-176 mm can be applied.

8 Quick assembly

Like any other accessory the applicator is plugged onto the printer with two pins and fixed with a screw.



Label transfer	Tamp	Roll-on	Blow
Label width mm	25 - 176	25 - 176	25 - 176
Label height mm	25 - 200	80 - 200	25 - 100
Cylinder stroke mm	220 / 300		
Tamp stroke below the device mm	70 / 150		
Compressed air bar	4 - 8		
Product surface	flat		
Product height variable	■	■	-
fixed	-	-	■
Product in rest	■	-	■
in motion	-	■	■



Tamp pad

The product remains fixed during application. The vacuum holes of the universal tamp pads are covered by a foil which is pierced according to the label size. The tamp pads are adjusted to the external dimensions of the labels.



Blow pad

The label can be blown on for pressure-sensitive products. The labels can be applied optionally onto the fixed or moving product. The blow pad moves up to a fixed height approx. 10 mm above the product.



Roll-on pad

The label is moved under the roll of the pad during application. The pad moves onto the product. During transport the label is rolled on.

Digital I/O-Interface

The master (e.g. PLC) starts or stops the labelling process. The status and error messages are issued at the same time.



Input / Output

- Start
- Stop
- Print first label
- Printer not ready
- No print job
- Combined alarm
- Basic position reached
- Labelling position reached
- Labelling error

Printing and dispensing on demand

The user can attach a present trigger or foot switch onto the present sensor PS6 and PS9 and the pause adapter PS7 to start the print job.



Present trigger

Starts printing and dispensing.



Foot switch

Starts printing and dispensing.



Product sensor

For automatic product detection on the conveyor belt.



Sub-D plug

Connection of the external control signals for automatic operation. Sub D plug 15-pole with screw clamps.



External panel

If the external panel is not accessible anymore, e.g. after installation within a facility, it is possible to install an external panel. Additionally there is a slot for a CF memory card Type 1 and a USB Master interface.